

Current Project, due for completion October 2017 for Hannah Court Student accommodation Sheffield sculpture will be 10m x 2m.

Hannah Court - Sparks : Torch and Triangles Design : Sheet 1
Artist Coralie Turpin

Theme
The torch or beam of sparks on the right of the design reflects the sparks theme which emerged from a thumbnail sketch discussion relating to Sheffield's industrial heritage in the early stages of the design process.

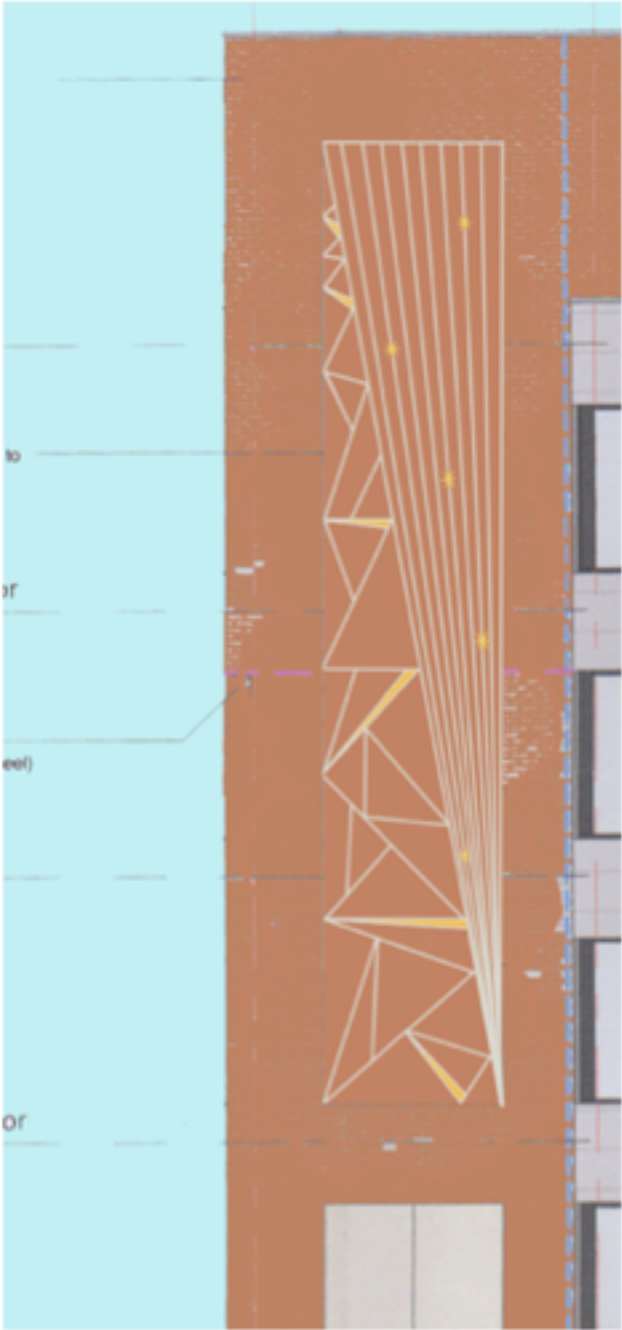
The factory operating on the site would have been making sparks in its manufacture of steel items as would other small factories in the area, the flickering light from sparks and the sounds of machinery from this process will have dominated the atmosphere.

The triangular part of the design on the left of the image represents the craggy cliffs of Stanage Edge and Sheffield's modern reputation as an outdoor city which attracts many students to study here. It also could be interpreted as forms found in crystal structures. It has angles within it that are similar shapes to the letters in HANNAH,

In developing the design the theme has incorporated a graphic style relating to scandinavian design with luxurious and indulgent real gold detail.

There are also Art Deco influences in this design in the shapes and the gold detail and the original logo for Silverpride who's factory was on this site contains lines that fan out in a similar way to the main beam part of the design.

This design is aspirational, gives an energy to the building as well as a stylistic and heritage related theme. It adds luxury and texture and is light, fun and contemporary.



Hannah Court - Sparks : Torch and Triangles Design : Sheet 1
Artist Coralie Turpin

Fabrication and materials
The outlines of the design will be fabricated using stainless steel square hollow section (size to be determined by weight restrictions). These will be bolted to the wall with discreet fixings and will be installed as panels.

The gold inserts will be 3 dimensional, they will be laser cut stainless steel folded (press braked) into shape and welded to the frame. A layer of richly coloured gold leaf mosaic will be applied to the surface.

The stars will be fixed in place on top of the frame and will be cast in metal with gold leaf applied to the surface.

The weight of the piece will be calculated during the final design and costings stage.

